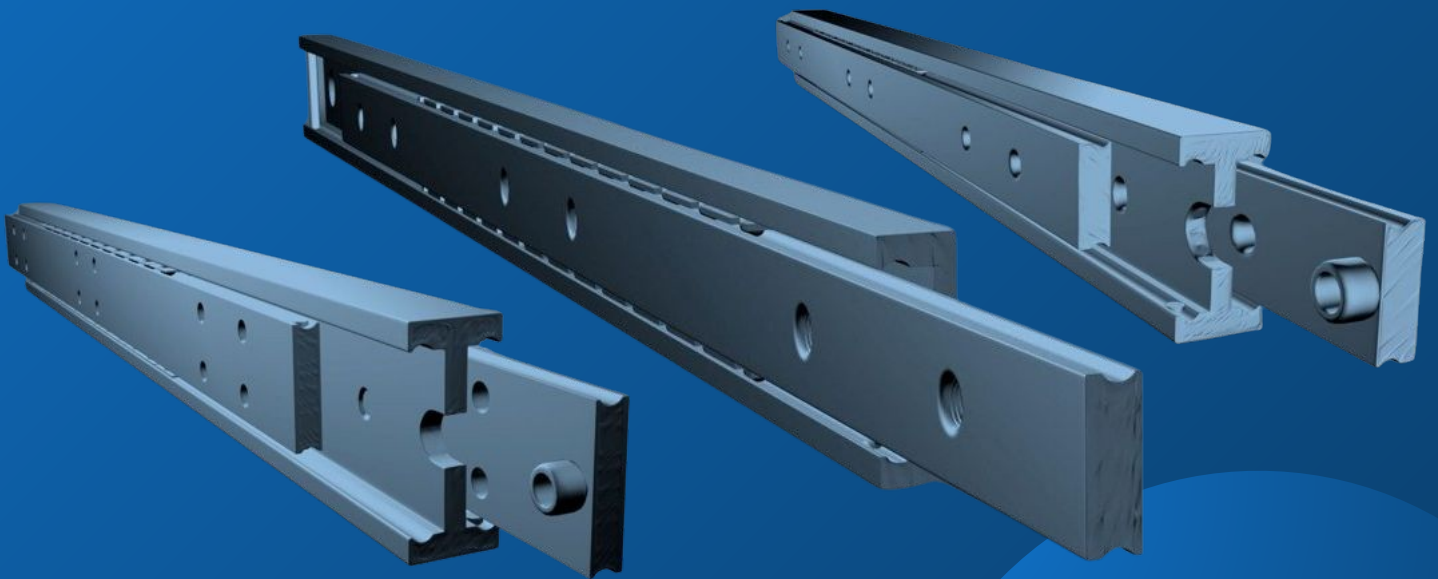




MILUXOR SCHIENEN

German manufacturer of heavy duty rails, telescopic slides and linear guides



High load capacity



Long durability



High resistance



Low maintenance

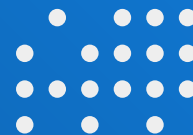


High smooth running



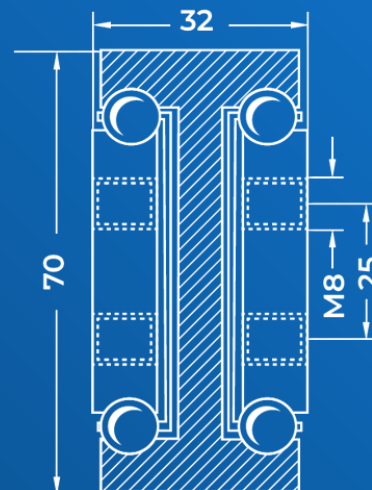
Precise processing





FULL EXTRACT MX-DTP 70

The MX-DTP 70 fully extending rails offers high installation, load capacity with a small footprint.



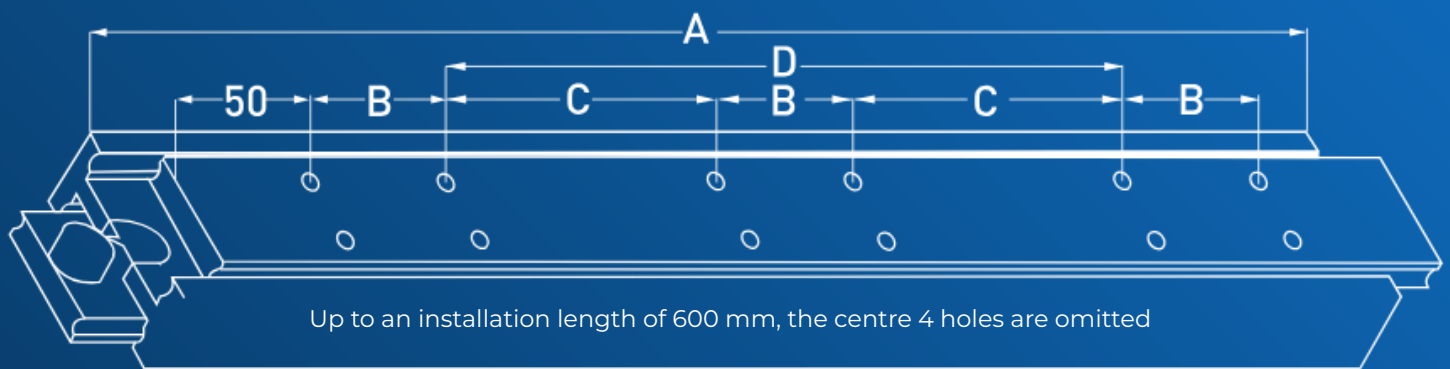
Technical Details

Load capacity	Up to 660 kg per pair
Available installation length	400 up to 2000 mm (More on request)
Bending	Max. 1% per meter at full load
Operating temperature	-50 °C up to 280 °C
Lifting movement	Through ball cages
Corrosion protection	Galvanized (C45)
Material	C45 / stainless steel / aluminum
Extension length	Same as installation length
Total length	Installation length + extension length
Mounting	8 or 12 x M8 threaded holes
Maintenance	Low maintenance
Adapted drilling pattern	On request
Customized products	On request





LOAD VALUES AND DRILLING PATTERN



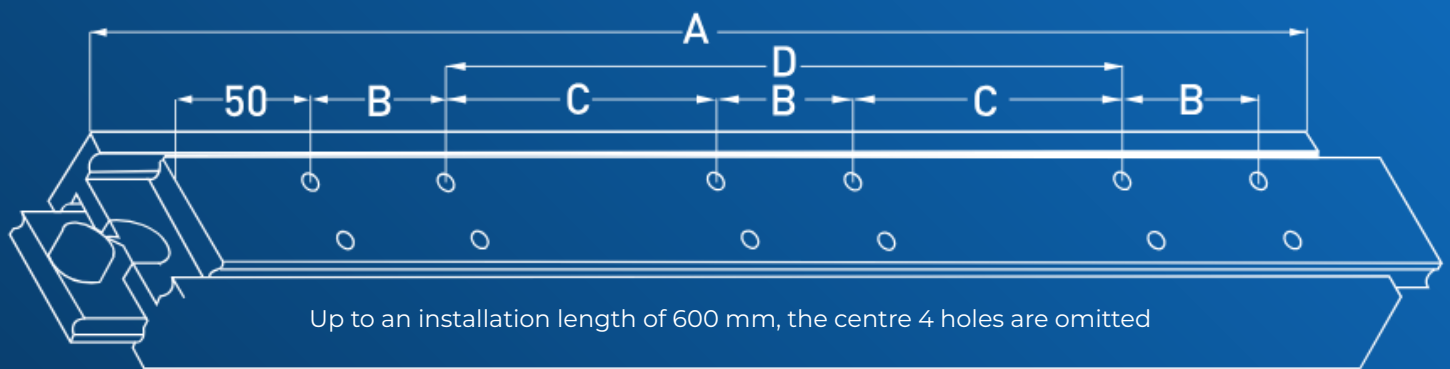
MX-DTP 70 Load values table		MX-DTP 70 drilling pattern table				
Article-No.	Installation length in mm	Load in kg*	Dimensi on A	Dimensi on B	Dimensi on C	Dimensi on D
DTP70.040	400	400	400	50	---	200
DTP70.045	450	410	450	50	---	250
DTP70.050	500	420	500	50	---	300
DTP70.055	550	430	550	50	---	350
DTP70.060	600	440	600	50	---	400
DTP70.065	650	450	650	50	200	---
DTP70.070	700	500	700	50	225	---
DTP70.075	750	550	750	50	250	---
DTP70.080	800	560	800	50	275	---
DTP70.085	850	580	850	50	300	---
DTP70.090	900	600	900	50	325	---
DTP70.095	950	620	950	50	350	---
DTP70.100	1000	650	1000	50	375	---
DTP70.105	1050	660	1050	50	400	---

* Load per pair in extended position, even weight distribution and vertical installation.





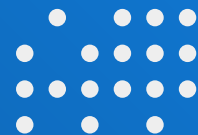
LOAD VALUES AND DRILLING PATTERN



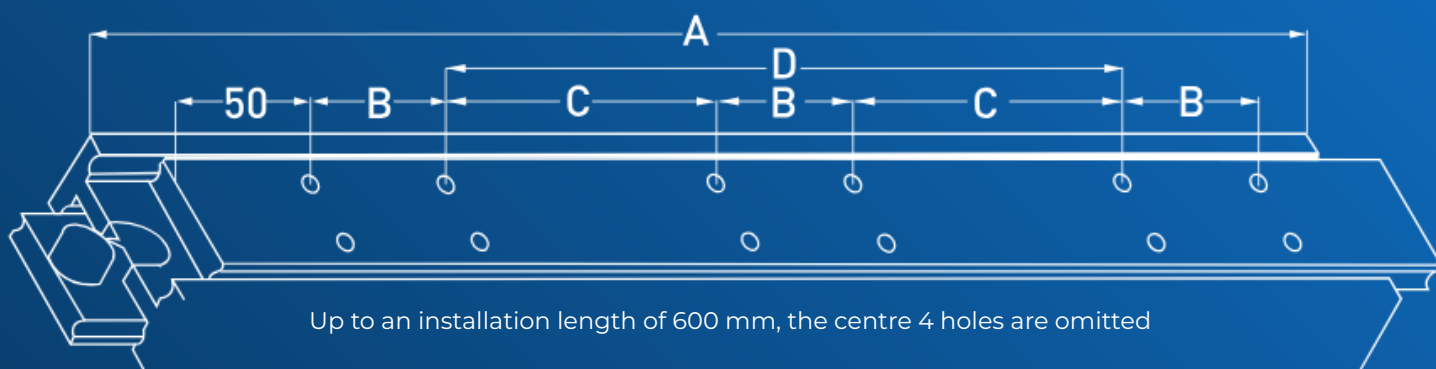
MX-DTP 70 Load values table		MX-DTP 70 drilling pattern table				
Article-No.	Installation length in mm	Load in kg*	Dimensi on A	Dimensi on B	Dimensi on C	Dimensi on D
DTP70.110	1100	660	1100	50	425	
DTP70.115	1150	650	1150	50	450	---
DTP70.120	1200	640	1200	50	475	---
DTP70.125	1250	620	1250	50	500	---
DTP70.130	1300	600	1300	50	525	---
DTP70.135	1350	580	1350	50	550	---
DTP70.140	1400	560	1400	50	575	---
DTP70.145	1450	540	1450	50	600	---
DTP70.150	1500	520	1500	50	625	---
DTP70.155	1550	500	1550	50	650	---
DTP70.160	1600	480	1600	50	675	---
DTP70.165	1650	460	1650	50	700	---
DTP70.170	1700	440	1700	100	650	---
DTP70.175	1750	420	1750	100	675	---
DTP70.180	1800	400	1800	100	700	

* Load per pair in extended position, even weight distribution and vertical installation.





LOAD VALUES AND DRILLING PATTERN



MX-DTP 70 Load values table		MX-DTP 70 drilling pattern table				
Article-No.	Installation length in mm	Load in kg*	Dimensi on A	Dimensi on B	Dimensi on C	Dimensi on D
DTP70.185	1850	380	1850	100	725	---
DTP70.190	1900	360	1900	100	750	---
DTP70.195	1950	340	1950	100	775	---
DTP70.200	2000	320	2000	100	800	---

* Load per pair in extended position, even weight distribution and vertical installation.





CUSTOMISED SOLUTIONS

In addition to the standard versions, we offer customised solutions that meet your individual requirements. Our aim is to supply you with high-quality, robust and durable telescopic slides that are perfectly tailored to your specific areas of application.

Customised products

Overextract	Extension length = installation length + 50 %
Over-Overextract	Extension length = installation length + 100 %
Pull-out direction	Optional in both directions
Double-sided extract	Optionally with access barrier
Special drillings	Customisable according to your requirements

You can rely on our many years of experience and expertise in the manufacture of heavy-duty rails for a wide range of industrial applications and projects.





CONTACT UND SUPPORT

Customised offer or questions?

We are always available to help you further. Together we will find a customised solution that is precisely tailored to your requirements / project.

Contact:

Miluxor Schienen GmbH
Kruppstr. 10
36041 Fulda, Deutschland

Phone: +49(0)661 - 9 62 78 28
E-Mail: info@miluxor-schienen.de
Web: www.miluxor-schienen.de

