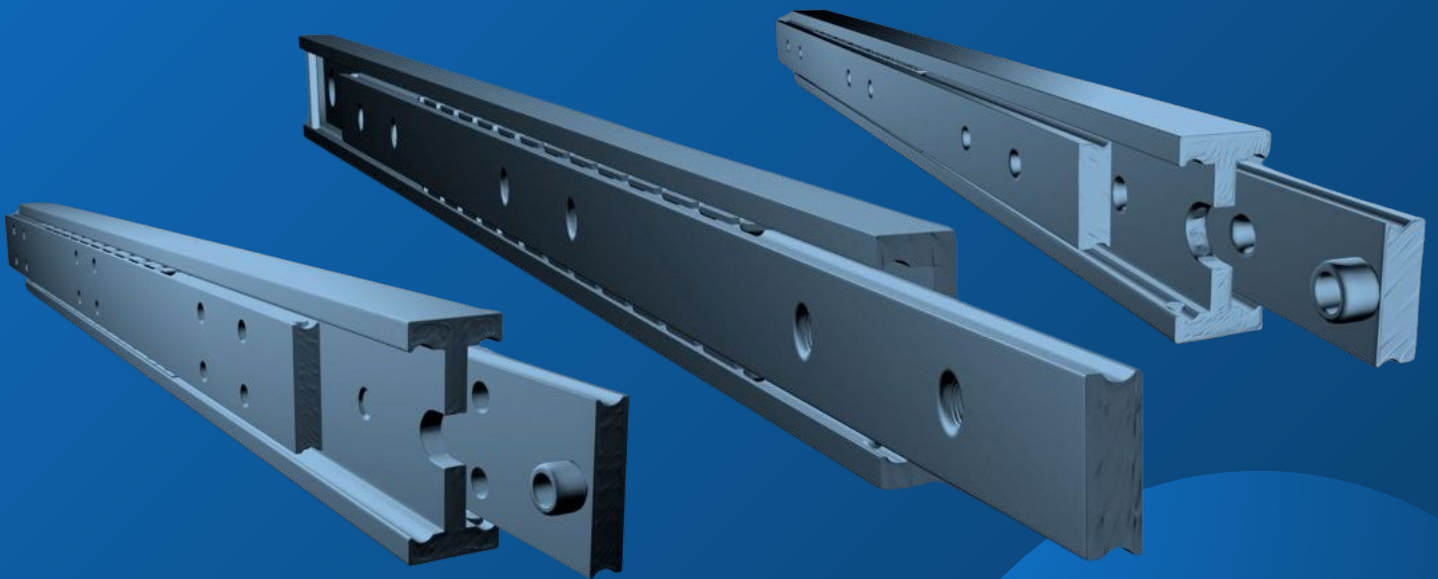




MILUXOR SCHIENEN

German manufacturer of heavy duty rails, telescopic slides and linear guides



High load capacity



Long durability



High resistance



Low maintenance



High smooth running



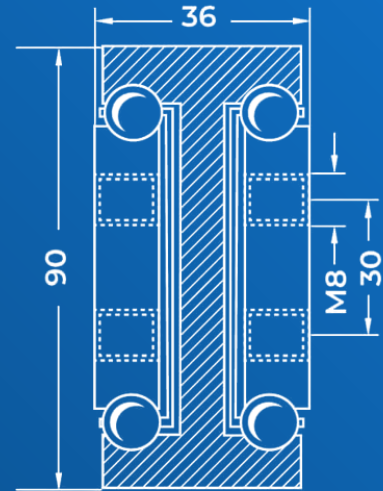
Precise processing





FULL EXTRACT MX-DTP 90

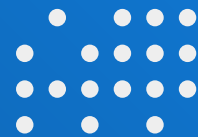
The MX-DTP 90 fully extending rails offers high installation, load capacity with a small footprint.



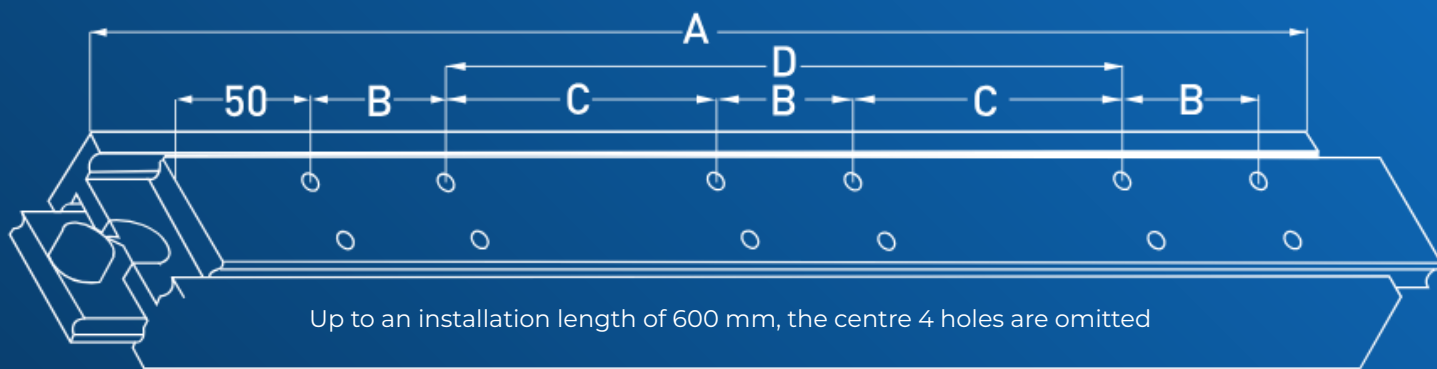
Technical Details

Load capacity	Up to 850 kg per pair
Available installation length	600 up to 2000 mm (More on request)
Bending	Max. 1% per meter at full load
Operating temperature	-50 °C up to 280 °C
Lifting movement	Through ball cages
Corrosion protection	Galvanized (C45)
Material	C45 / stainless steel / aluminum
Extension length	Same as installation length
Total length	Installation length + extension length
Mounting	12 x M8 threaded holes
Maintenance	Low maintenance
Adapted drilling pattern	On request
Customized products	On request





LOAD VALUES AND DRILLING PATTERN



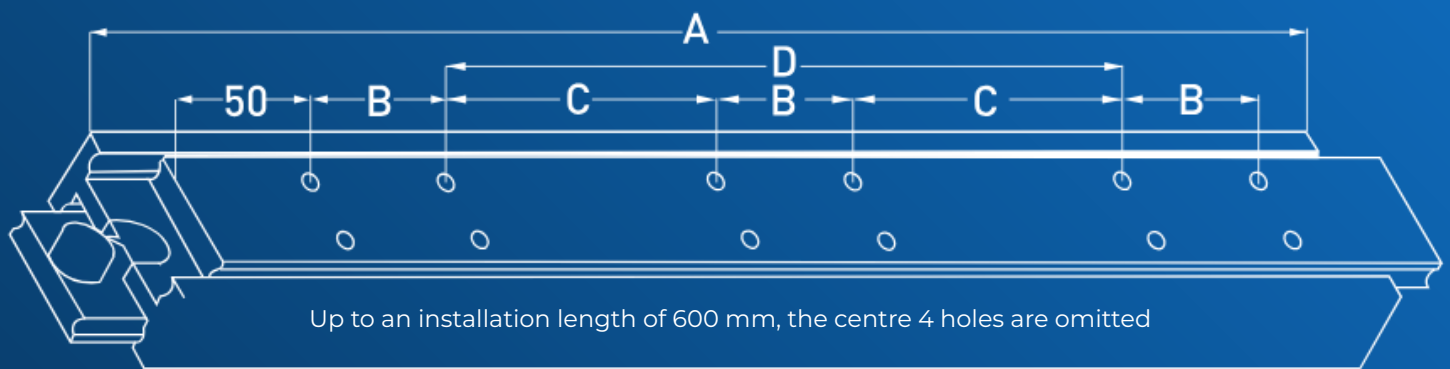
MX-DTP 90 Load values table		MX-DTP 90 drilling pattern table				
Article-No.	Installation length in mm	Load in kg*	Dimensi on A	Dimensi on B	Dimensi on C	Dimensi on D
DTP90.060	600	700	600	50	---	400
DTP90.065	650	720	650	50	200	---
DTP90.070	700	740	700	50	225	---
DTP90.075	750	760	750	50	250	---
DTP90.080	800	780	800	50	275	---
DTP90.085	850	800	850	50	300	---
DTP90.090	900	820	900	50	325	---
DTP90.095	950	830	950	50	350	---
DTP90.100	1000	840	1000	50	375	---
DTP90.105	1050	850	1050	50	400	---
DTP90.110	1100	840	1100	50	425	---
DTP90.115	1150	830	1150	50	450	---
DTP90.120	1200	820	1200	50	475	---
DTP90.125	1250	810	1250	50	500	---
DTP90.130	1300	800	1300	50	525	---

* Load per pair in extended position, even weight distribution and vertical installation.





LOAD VALUES AND DRILLING PATTERN



MX-DTP 90 Load values table		MX-DTP 90 drilling pattern table				
Article-No.	Installation length in mm	Load in kg*	Dimensi on A	Dimensi on B	Dimensi on C	Dimensi on D
DTP90.135	1350	790	1350	50	550	---
DTP90.140	1400	780	1400	50	575	---
DTP90.145	1450	760	1450	50	600	---
DTP90.150	1500	740	1500	50	625	---
DTP90.155	1550	720	1550	50	650	---
DTP90.160	1600	700	1600	50	675	---
DTP90.165	1650	680	1650	50	700	---
DTP90.170	1700	660	1700	50	650	---
DTP90.175	1750	640	1750	50	675	---
DTP90.180	1800	620	1800	50	700	---
DTP90.185	1850	600	1850	50	725	---
DTP90.190	1900	580	1900	50	750	---
DTP90.195	1950	560	1950	50	775	---
DTP90.200	2000	550	2000	50	800	---

* Load per pair in extended position, even weight distribution and vertical installation.





CUSTOMISED SOLUTIONS

In addition to the standard versions, we offer customised solutions that meet your individual requirements. Our aim is to supply you with high-quality, robust and durable telescopic slides that are perfectly tailored to your specific areas of application.

Customised products

Overextract	Extension length = installation length + 50 %
Over-Overextract	Extension length = installation length + 100 %
Pull-out direction	Optional in both directions
Double-sided extract	Optionally with access barrier
Special drillings	Customisable according to your requirements

You can rely on our many years of experience and expertise in the manufacture of heavy-duty rails for a wide range of industrial applications and projects.





CONTACT UND SUPPORT

Customised offer or questions?

We are always available to help you further. Together we will find a customised solution that is precisely tailored to your requirements / project.

Contact:

Miluxor Schienen GmbH
Kruppstr. 10
36041 Fulda, Deutschland

Phone: +49(0)661 - 9 62 78 28
E-Mail: info@miluxor-schienen.de
Web: www.miluxor-schienen.de

