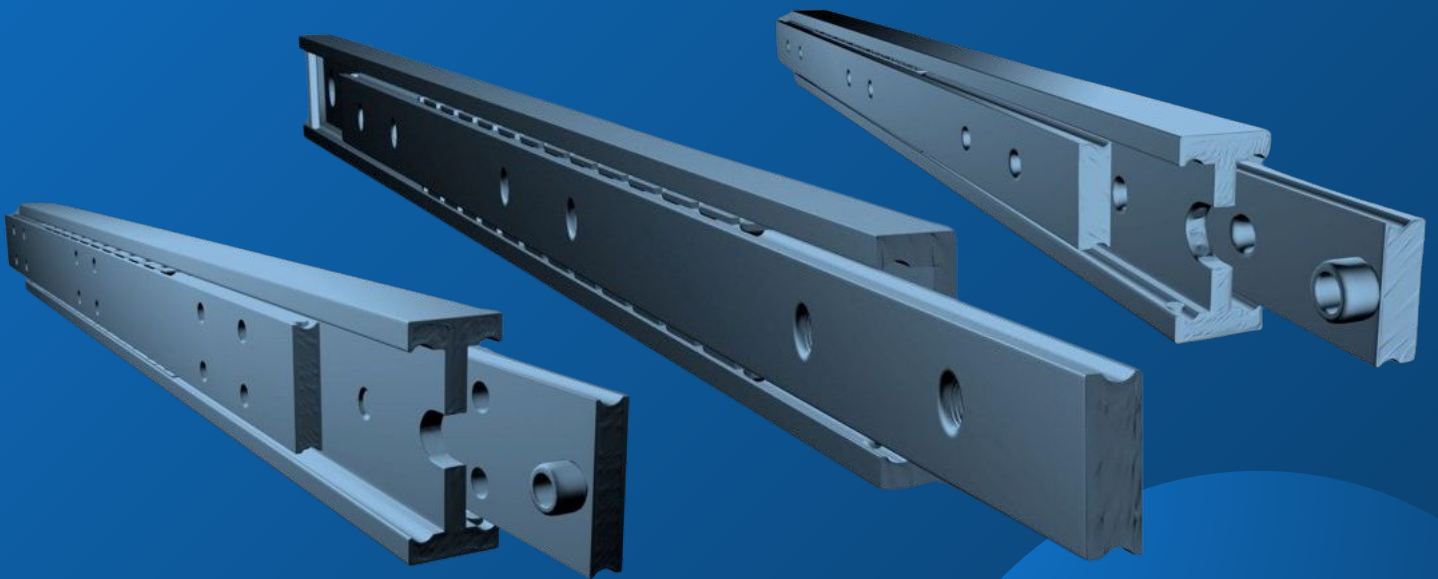




MILUXOR SCHIENEN

German manufacturer of heavy duty rails, telescopic slides and linear guides



High load capacity



Long durability



High resistance



Low maintenance



High smooth running



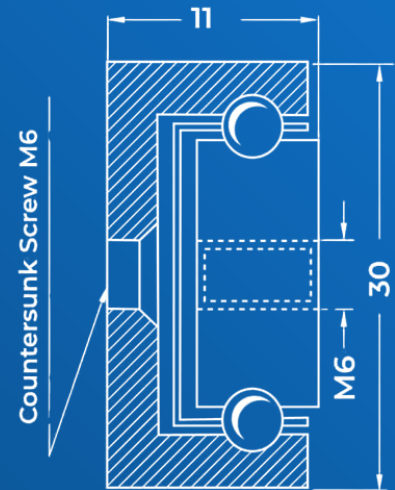
Precise processing





PART EXTRACT MX-CP 30

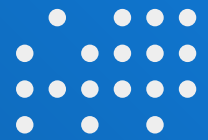
The part extract offers a high load capacity in a small space. Even with a high load capacity, the smooth running is maintained.



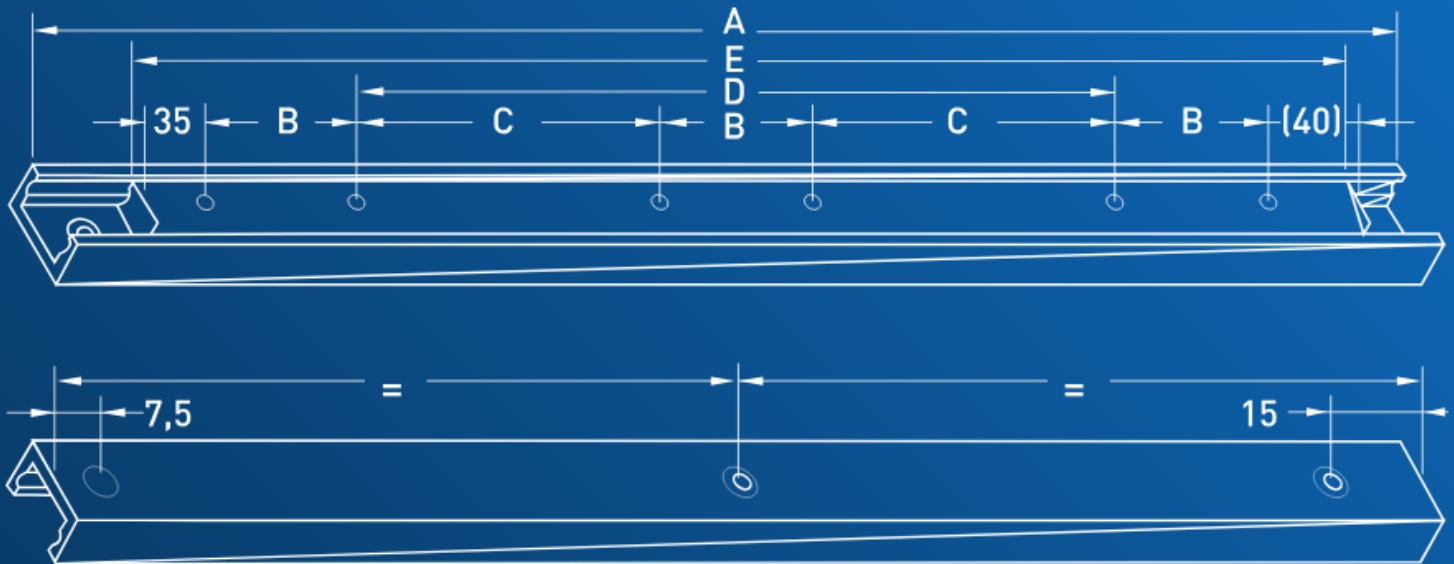
Technical Details

Load capacity	Up to 145 kg per pair
Available installation length	250 up to .000 mm (More on request)
Bending	Max. 1% per meter at full load
Operating temperature	-50 °C up to 280 °C
Lifting movement	Through ball cages
Corrosion protection	Galvanized (C45)
Material	C45 / stainless steel / aluminum
Extension length	Half installation length
Total length	Installation length + extension length
Mounting	2 or 3 x M6 countersunk screws
Mounting inner rail	4 or 6 x M6 threaded holes
Maintenance	Low maintenance
Adapted drilling pattern	On request
Customized products	On request





LOAD VALUES AND DRILLING PATTERN



Up to an installation length of 450 mm, the middle 2 holes are omitted

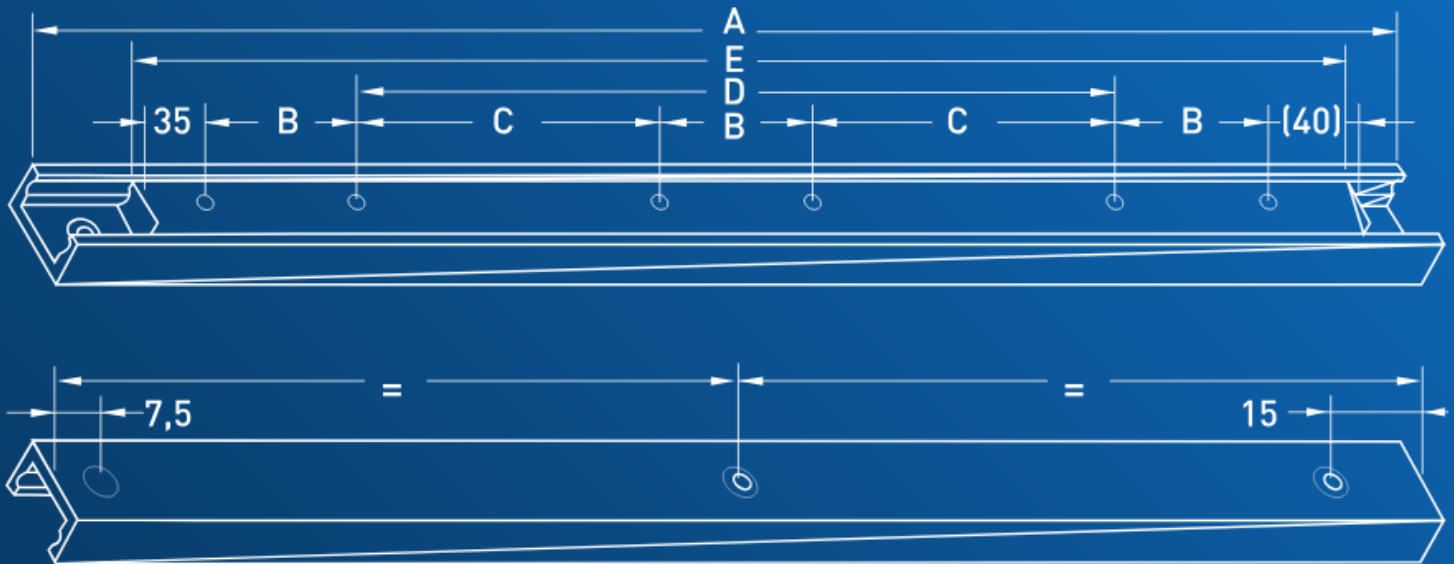
MX-CP 30 Load values table		MX-CP 30 drilling pattern table					
Article-No.	Installation length in mm	Load in kg*	Dimension A	Dimension B	Dimension C	Dimension D	Dimension E
CP30.025	250	145	250	50	---	50	225
CP30.030	300	140	300	50	---	100	275
CP30.035	350	135	350	50	---	150	325
CP30.040	400	130	400	50	---	200	375
CP30.045	450	120	450	50	---	250	425
CP30.050	500	115	500	50	125	---	475
CP30.055	550	110	550	50	150	---	525
CP30.060	600	105	600	50	175	---	575
CP30.065	650	100	650	50	200	---	625

* Load per pair in extended position, even weight distribution and vertical installation.





LOAD VALUES AND DRILLING PATTERN



Up to an installation length of 450 mm, the middle 2 holes are omitted

MX-CP 30 Load values table		MX-CP 30 drilling pattern table					
Article-No.	Installation length in mm	Load in kg*	Dimension A	Dimension B	Dimension C	Dimension D	Dimension E
CP30.070	700	95	700	50	225	---	675
CP30.075	750	90	750	50	250	---	725
CP30.080	800	85	800	50	275	---	775
CP30.085	850	80	850	50	300	---	825
CP30.090	900	75	900	50	325	---	875
CP30.095	950	70	950	50	350	---	925
CP30.100	1000	60	1000	50	375	---	975

* Load per pair in extended position, even weight distribution and vertical installation.





CONTACT UND SUPPORT

Customised offer or questions?

We are always available to help you further. Together we will find a customised solution that is precisely tailored to your requirements / project.

Contact:

Miluxor Schienen GmbH
Kruppstr. 10
36041 Fulda, Deutschland

Phone: +49(0)661 - 9 62 78 28
E-Mail: info@miluxor-schienen.de
Web: www.miluxor-schienen.de

