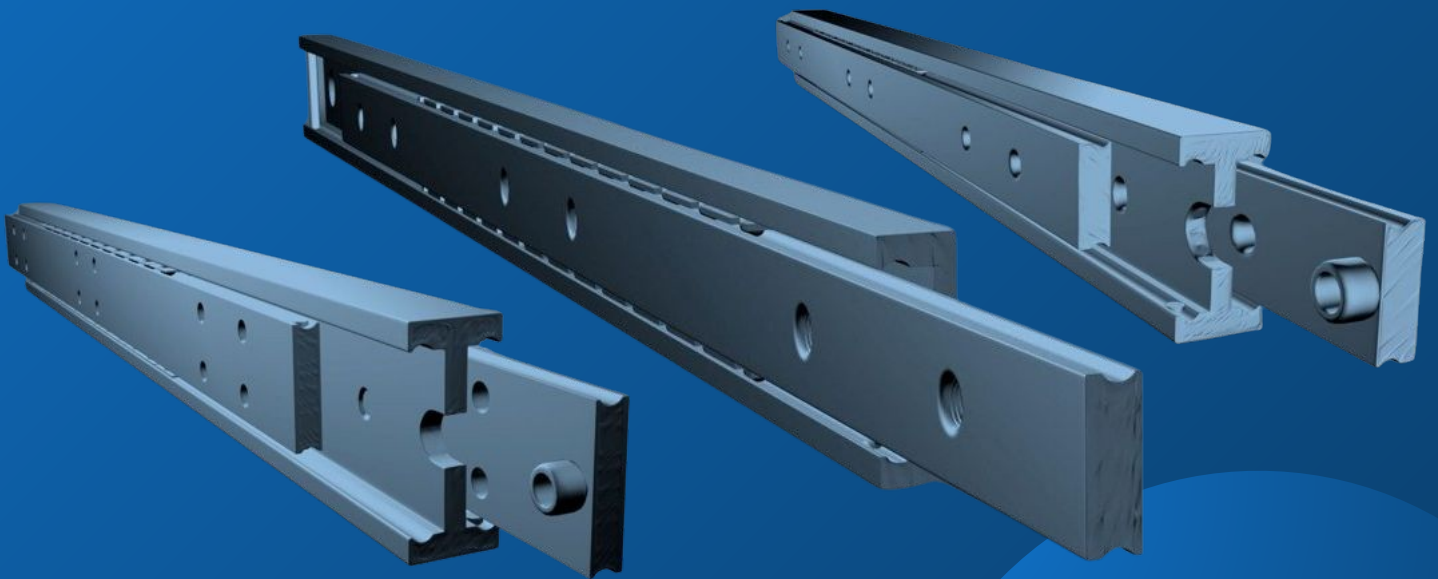




# MILUXOR SCHIENEN

German manufacturer of heavy duty rails, telescopic slides and linear guides



High load capacity



Long durability



High resistance



Low maintenance



High smooth running



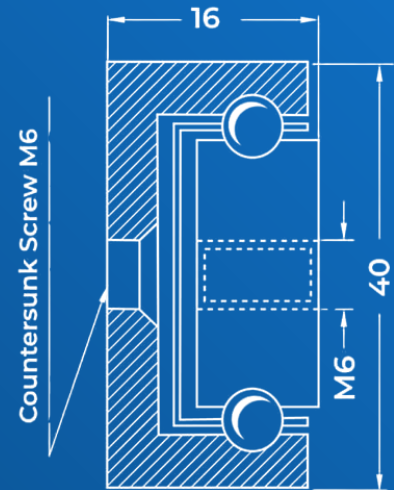
Precise processing





# PART EXTRACT MX-CP 40

The part extract offers a high load capacity in a small space. Even with a high load capacity, the smooth running is maintained.



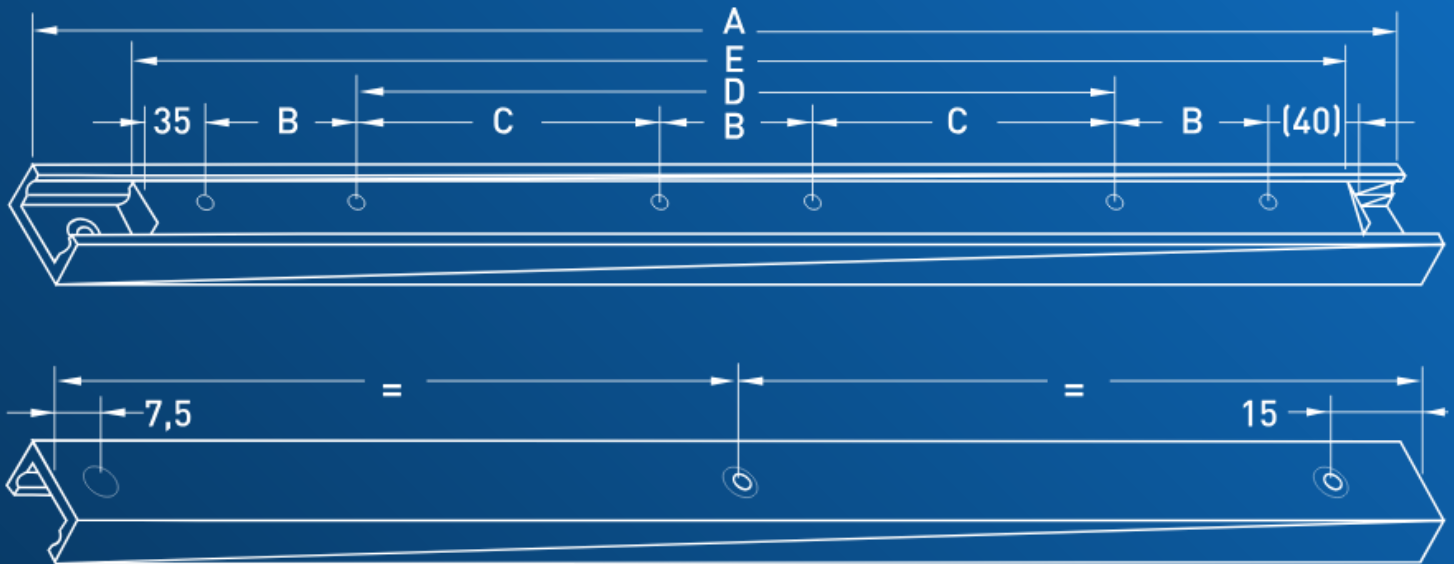
## Technical Details

<b>Load capacity</b>	Up to 225 kg per pair
<b>Available installation length</b>	300 up to 1200 mm (More on request)
<b>Bending</b>	Max. 1% per meter at full load
<b>Operating temperature</b>	-50 °C up to 280 °C
<b>Lifting movement</b>	Through ball cages
<b>Corrosion protection</b>	Galvanized (C45)
<b>Material</b>	C45 / stainless steel / aluminum
<b>Extension length</b>	Half installation length
<b>Total length</b>	Installation length + extension length
<b>Mounting</b>	2 or 3 x M6 countersunk screws
<b>Mounting inner rail</b>	4 or 6 x M6 threaded holes
<b>Maintenance</b>	Low maintenance
<b>Adapted drilling pattern</b>	On request
<b>Customized products</b>	On request





# LOAD VALUES AND DRILLING PATTERN



Up to an installation length of 450 mm, the middle 2 holes are omitted

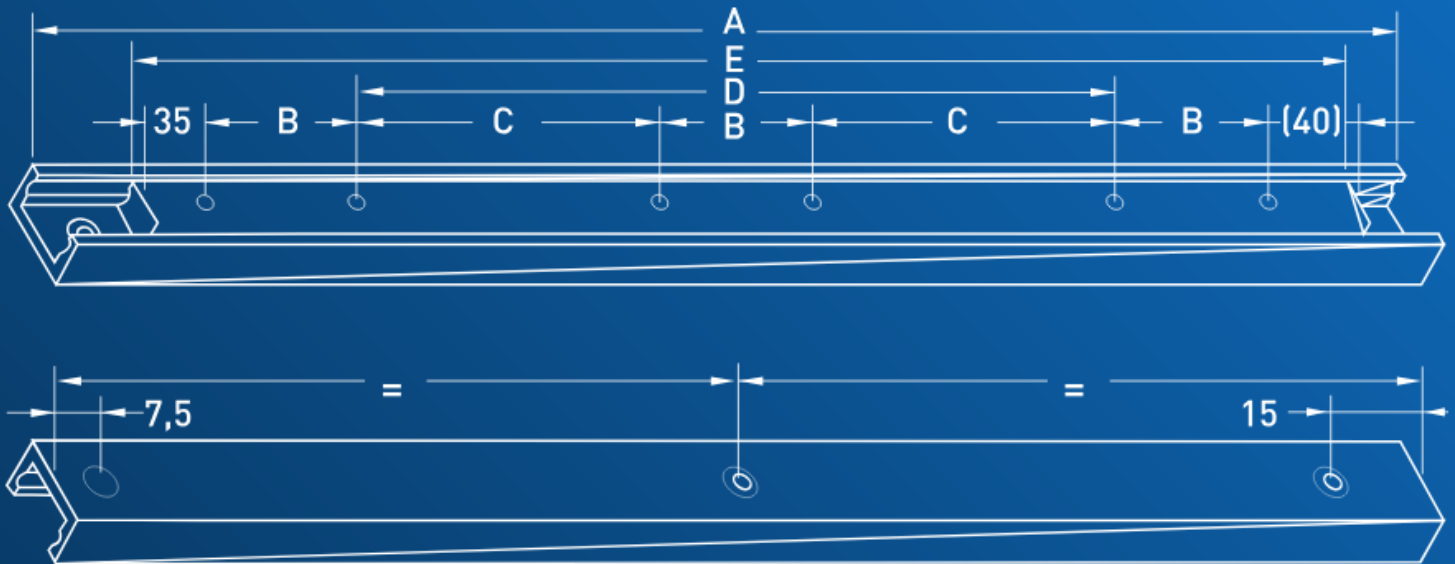
MX-CP 40 Load values table		MX-CP 40 drilling pattern table					
Article-No.	Installation length in mm	Load in kg*	Dimension A	Dimension B	Dimension C	Dimension D	Dimension E
CP40.030	300	225	300	50	---	100	275
CP40.035	350	220	350	50	---	150	325
CP40.040	400	215	400	50	---	200	375
CP40.045	450	210	450	50	---	250	425
CP40.050	500	200	500	50	125	---	475
CP40.055	550	190	550	50	150	---	525
CP40.060	600	190	600	50	175	---	575
CP40.065	650	185	650	50	200	---	625
CP40.070	700	180	700	50	225	---	675

\* Load per pair in extended position, even weight distribution and vertical installation.





# LOAD VALUES AND DRILLING PATTERN



Up to an installation length of 450 mm, the middle 2 holes are omitted

MX-CP 40 Load values table		MX-CP 40 drilling pattern table					
Article-No.	Installation length in mm	Load in kg*	Dimension A	Dimension B	Dimension C	Dimension D	Dimension E
CP40.075	750	175	750	50	250	---	725
CP40.080	800	175	800	50	275	---	775
CP40.085	850	170	850	50	300	---	825
CP40.090	900	170	900	50	325	---	875
CP40.095	950	165	950	50	350	---	925
CP40.100	1000	155	1000	50	375	---	975
CP40.105	1050	150	1050	50	400	---	1025
CP40.110	1100	145	1100	50	425	---	1075
CP40.115	1150	140	1150	50	450	---	1125
CP40.120	1200	140	1200	50	475	---	1175

\* Load per pair in extended position, even weight distribution and vertical installation.





# CONTACT UND SUPPORT

Customised offer or questions?

We are always available to help you further. Together we will find a customised solution that is precisely tailored to your requirements / project.

Contact:

Miluxor Schienen GmbH  
Kruppstr. 10  
36041 Fulda, Deutschland

Phone: +49(0)661 - 9 62 78 28  
E-Mail: [info@miluxor-schienen.de](mailto:info@miluxor-schienen.de)  
Web: [www.miluxor-schienen.de](http://www.miluxor-schienen.de)

